



SIMPLY HOMES

Old Lane

Knebworth SG3 6AD



# Old Lane

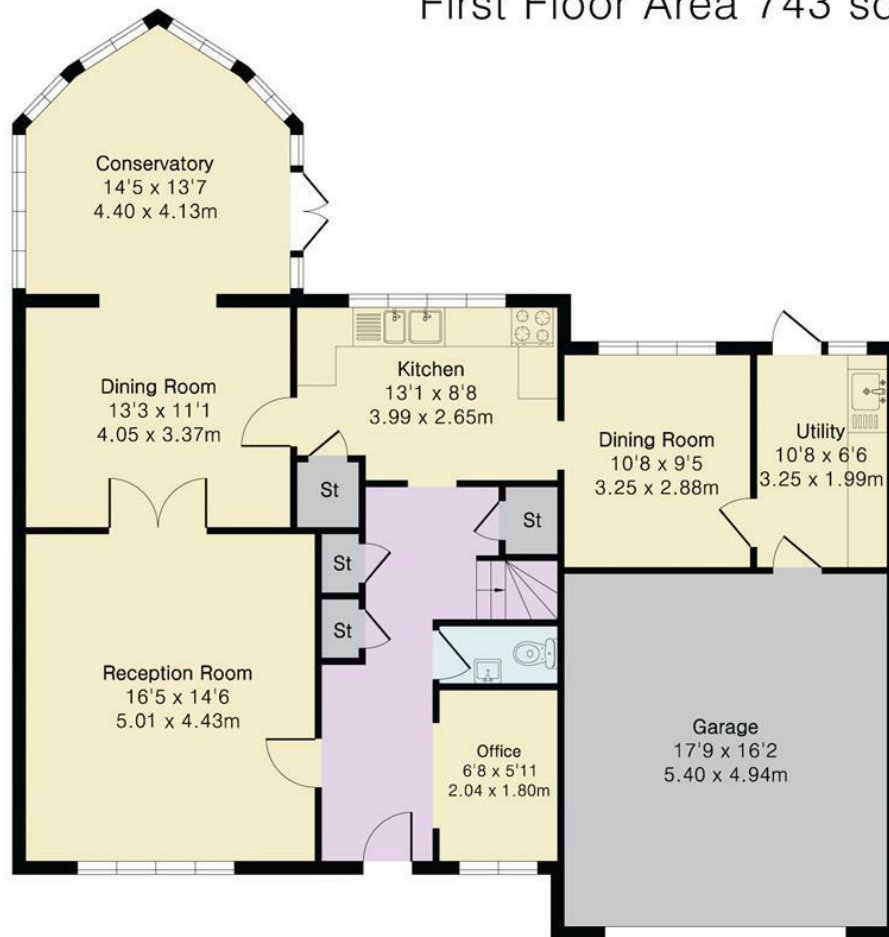
Knebworth SG3 6AD



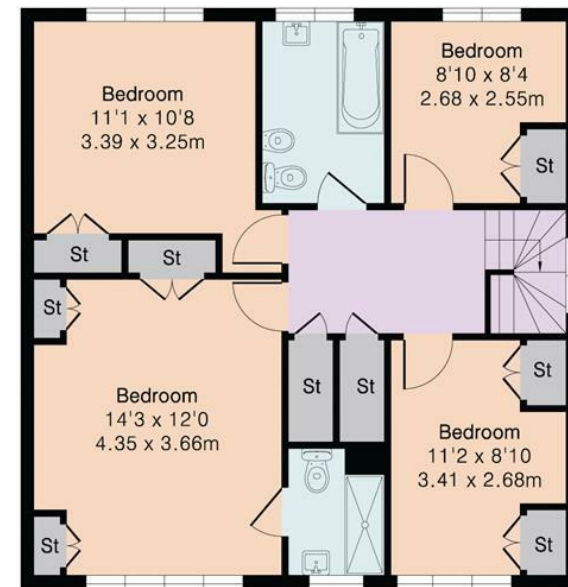
**Approximate Gross Internal Area 2118 sq ft - 197 sq m  
(Including Garage)**

Ground Floor Area 1375 sq ft – 128 sq m

First Floor Area 743 sq ft – 69 sq m



Ground Floor



First Floor



SIMPLY HOMES

115 Fore Street | Hertford | SG14 1AS | 01992 558 557 | sales@simply-homes.co.uk | simply-homes.co.uk | Find us on

